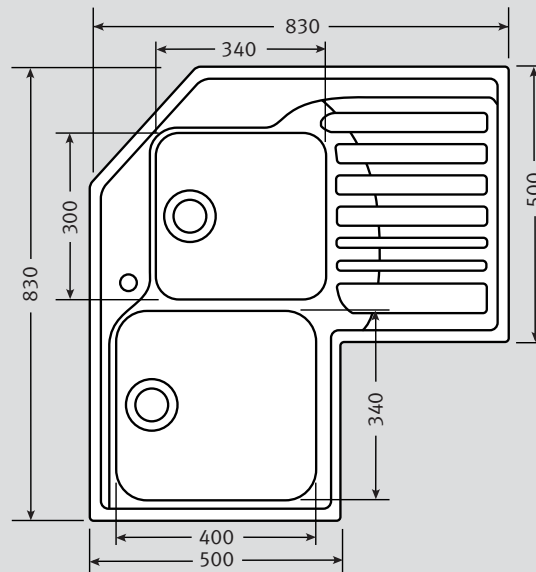

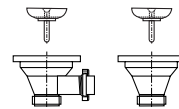


# STX 621-E Specifications

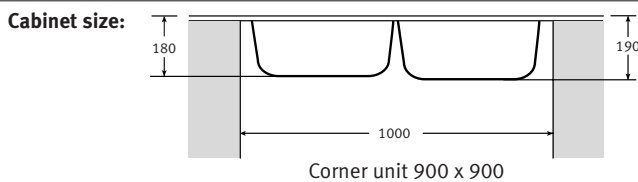
- Modern functional design
- One and three quarter bowl format
- Extra large multi-purpose bowl
- Useful Drainer
- 2 x 90mm Waste with Basket Strainer Waste. Capable of adaptation to take Waste Disposal Unit
- Waste at rear of bowl
- Available left or right handed



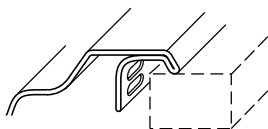
<b>Material:</b>	304 Austenitic 18/10 Stainless Steel	<b>Waste:</b>	1 x Fisc 90mm Basket Strainer Waste with overflow 1 x Fisc 90mm Basket Strainer Waste	<b>Overflow:</b>	
<b>Application:</b>	Inset				
<b>Bowl size:</b>	400 x 340 x 190 300 x 340 x 180				
<b>Drainer Format:</b>	Left or right hand drainer available				
<b>Cut-out size:</b>	Utilise template				
<b>Colour:</b>	Silk Stainless Steel				
<b>Seal:</b>	Sealing strip supplied				
<b>Insulation:</b>	Factory fitted black pads				
<b>Heat Resistance:</b>	Up to 300°C				
<b>Earthing Point:</b>	Utilise clip rail slots				



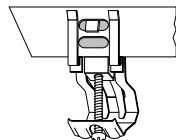
**Accessories:** none available



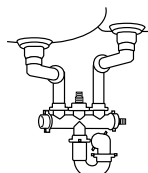
**Sink Profile:** Folded edge



**Fixing Clips:**



**Suggested Plumbing Kit:** 2 part



**Taps:** Any Franke tap can be utilised with this model\* (owing to the profile of this model we do not recommend Olympus, Dolphin or Franke Triflow taps with these sink).

\*Ceramic disc taps in certain installations or where there is a low head of water (below 4 metres) may not provide adequate flow rates. You are advised to check with your supplier.

Some taps may need bracing to avoid flexing of the sink ledge.

**Guarantee:** Franke sinks are guaranteed for 25 years against manufacturing defect. Franke taps are guaranteed against defective materials and workmanship for 1 year in relation to coatings and finishes, and 5 years in relation to moving parts. Franke will replace (and where appropriate repair) defective sinks. In relation to taps, Franke will where appropriate provide replacement parts for your taps or replace your taps. Any associated or ancillary costs to be incurred by you as a result of replacement of Franke sinks and taps under this guarantee shall in all cases be previously approved by Franke UK Limited. This guarantee is in addition to and does not affect your statutory rights.